

Historic, archived document

Do not assume content reflects current scientific knowledge, policies, or practices.

62.13 Conard-Pyle Co.
West Grove, Pa.

Golden Anniversary

LIBRARY RECEIVED

★ SEP 24 1947 ★

U. S. DEPARTMENT OF AGRICULTURE



STAR ROSES Fall 1947

Our Golden Anniversary Year

1897

1947

Introducing

OUR BEST YEARS JUST BEGUN

Why should we pause at the 50th milestone in our business, except to take lessons from the past, give credit where due, and point to what should be expected from us in the years ahead?

Near the beginning of the 20th century this firm had at West Grove the double advantage of excellent soil and climate and personnel with a half-century's training as nurserymen. Indeed the National Mail Order Rose business had begun here. The second half century has abundantly justified the founders' faith that quality and worth built into a product are a solid foundation on which to build.

Alfred F. Conard had long been president of the Dingee and Conard Company, at one time a distinguished Rose firm here. Antoine Wintzer had been the vice-president and propagator. These two, with S. Morris Jones, a neighbor, and Robert L. Pyle, a local business man and silent partner, incorporated The Conard & Jones Company in June 1897. That same month, Robert Pyle, having just graduated from Swarthmore College, was detained there to substitute as Business Manager. In 1898 he became an employee of the new Company. In 1906 upon the death of Alfred F. Conard he became president. Later, he and his father purchased the major interest in the Company of the Alfred F. Conard estate and of S. Morris Jones. In 1924 the firm name was changed to "The Conard-Pyle Company."

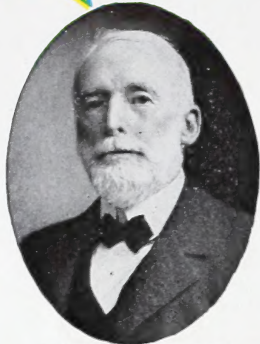
Sidney B. Hutton, now vice-president and general manager, joined the firm in 1930. His son Sidney B. Hutton, Jr., came in 1942. George Ohlhus, our Rose grower since 1929, is also a director. At first the line of plants offered included long lists of shrubs, vines and house plants, also seeds and bulbs. Management early realized the need to concentrate on a more limited line to insure nationwide recognition of a superior product. Not only did Roses become the leading specialty but "The Best Roses for America" was made a central aim.

There followed two innovations: (1) The adoption of the Star as a Trademark, in consequence of which the celluloid Star tag became the emblem of (2) Our guarantee to refund full value for or replace any Rose that did not bloom.

Progress along another line led us to switch from growing own-root Roses from cuttings in greenhouses to field-grown Roses budded on the roots of a vigorous wild Rose. West Grove has proved to be an ideal location for this method.

Ambition to have always "The Best Roses for America" drove us to become pioneer plant hunters (see p. 3). Repeated Rose exploration trips to Europe have followed the first invitation sent to our president to be judge at the 1911 International Rose Contest in Paris. The test of merit in the selections thus made is not in the number of kinds introduced but in the large number that have so long continued to be used and loved.

"The present is but prologue." A new generation is here being trained to carry on our program of providing for you regularly at a fair price, not millions of mediocre plants but only as many as will make good and especially "The Best Roses for America."



ALFRED F. CONARD
1835-1906

Our first president. Previously, he had put out the first mail-order Rose catalog in America.



ANTOINE WINTZER
1847-1925

Our first vice-president. An exceptionally able propagator; born in Alsace, France.



Fabian Bachrach Photo

ROBERT PYLE
President since 1906

President
Vice-President
Vice-President
Secretary
Treasurer

Robert Pyle
Antoine Wintzer
Sidney B. Hutton
George Ohlhus
Wm. Pyle Groff

THE CONARD-PYLE CO.

Star Rose Growers

West Grove, Pa., U. S. A.

Catalogs published in 1894, 1898 and 1925 show the development of photography and color printing, from quaint wood cuts and "paintings from nature" to the life-like, accurate color photos of today.





AMERICAN PILLAR,
a favorite on two
continents

50 YEARS WITH ONE AIM—

"The Best Roses For America"

Our catalog of 1903 stated in its introduction, "We are the largest originators of new roses and new cannas in this country today." There followed a list of Rose introductions which included **Clara Barton** (named for the founding president of the International Red Cross, and introduced in 1899) and a number of early Van Fleet climbers, among them **May Queen** (1898) and **Philadelphia** (1902).

Other kinds introduced long ago included such famous kinds as **Sir Thomas Lipton** (1904), **Birdie Bly** and **American Pillar** (1906), the latter illustrated here with a copy of its first color illustration, made from an artist's painting before the days of color photography. American Pillar became one of the most popular of climbers, in this country, in Europe and in England, as it still is, after 40 years of continuous sale.

The policy of originating, seeking and introducing worthy new Roses has been continued, with a proud roster of popular modern varieties such as **Spanish Beauty** (1928), **Mrs. P. S. du Pont** (1929), **Ami Quinard** (1930), **Editor McFarland** and **Soeur Therese** (1931), **Condesa de Sastago** (1932), **Angels Mateu** and **Mme. Cochet-Cochet** (1934).

Our first miniature Rose, **Tom Thumb** (1936) was followed by others—**Pixie** and **Baby Gold Star** (1940), **Midget** (1941) and **Sweet Fairy** (1946).

A "Time Garden" could be planted, using those fine varieties and continuing with (to name but a few): **Christopher Stone** and **Snowbird** (1936), **Mme. Henri Guillot** and **Flash** (1938), **Girona** (1939), **Good News** (1940), **Bianche Mallerin** (1941), **Red Ripples** and **Grande Duchesse Charlotte** (1942), **Lowell Thomas** and **Crimson King** (1943), **Floradora** and **Horace McFarland** (1944) and the almost unbelievably beautiful **Peace** (1945).

Peace
(Mme. A. Meillard)
Plant Pat. 591

PEACE
(Mme. A. Meillard)
Plant Pat. 591

THE PRIZE-WINNER

In 1941, as a seedling, Peace won the Gold Medal of the National Horticultural Society of France.

1942: "Most Beautiful Rose of France" award.

1944: Gold Medal Certificate, International Rose Test Garden, Portland, Oregon.

1946: All-America Rose Selections award with the highest score ever given any Rose, before or since.

1946 and 1947: Rated 9.5 and 9.4 out of a possible 10 by votes of American Rose Society members the country over.

1947: "Best Rose of the Show" at Tennessee Rose Society Show and Grand Sweepstakes Award at Portland, Ore., Rose Festival. The blue ribbon winner at countless other Rose shows in all sections of the country.

Its greatest prize of all, the joy it has brought to home gardeners everywhere.

★ **PEACE** (Mme. A. Meillard). Plant Pat. 591.

Photographs give but a hint of the incredible beauty of Peace. The buds are golden with a flush of pink along the petal edges. They open very slowly, giving long-lasting blooms which show delicate tints of yellow, pale gold, cream and ivory blending on each petal to a lightly ruffled edge of pink. They are clear, bright, living colors, merging one into the other like the fresh and lovely colors in the perfect complexion of a happy child.

Though the very double bloom is huge, it is constantly fresh looking and gives the effect of delicate loveliness even in the fully open flower, which is as beautiful as the bud. The colors vary and the change of tints is an enchanting thing to watch, as it differs from day to day and from flower to flower but is always beautiful and always in harmony, like the different, shimmering colors of a rainbow.

The plants of Peace are as remarkable as the blooms, with long, straight, magnificently strong stems and handsome, shining, dark green foliage. The blooms come in glorious succession and hold their form and freshness an unbelievable time, either as a cut-flower or on the bush. Truly, Peace is a Rose which "has everything." \$2 ea.; 3 for \$5.





CREAM OF

In these front pages of novelties we bring you the cream of the recent work of Rose breeders from all over the world. Until you have tried them, it is hard to realize the advances that have been made in Rose development toward richer colors, more vigorous plants and greater quantity of bloom, through spring, summer and fall. The improvement over former kinds is steadily in evidence, as shown by the varieties here offered. One of the greatest thrills of gardening is to grow some of the newer varieties of Roses. We offer only those which we believe to be really superior.

★**FANTASIA.** H.T. (A. Dickson & Sons.) Plant Pat. 590. A new yellow. Lovely buds, shading from golden yellow to peach. It blooms much more than the average Hybrid Tea, most often in clusters. Wild Rose fragrance. \$1.50 ea.; 3 for \$4.

★**FANTASTIQUE.** H.T. (F. Meiland.) Plant Pat. 574. The 3½-inch flowers are light yellow, with each petal edge feathered carmine like a picotee tulip. Low growing, with early and abundant bloom. It is charming and "different" for the front row of a planting. \$1.25 ea.; 3 for \$3.35.

★**FRED EDMUNDS.** H.T. (Mallerin.) Plant Pat. 731. Regional Award winner. Burnt-orange buds open to 50-petaled blooms of vivid, glowing copper-orange, one of the most brilliant and beautiful of Roses. Fruity fragrance; very shiny foliage. (One park superintendent was asked by a visitor if the leaves had been varnished!) Some growers have found this Rose difficult but others have found it one of the most brilliant novelties in many years. \$1.50 ea.; 3 for \$4.



© C.F. CO.

★**Boudoir.** \$1.50 ea.

★**BOUDOIR.** H.T. (F. Meiland.) An unusual, two-toned flower, large and very full. The novel coloring is radiant Tyrian-rose on the inside of the petals and velvety, creamy white on the reverse, in strong contrast. \$1.50 ea.; 3 for \$4.

★**BLANCHE MALLERIN.** H.T. See picture on back cover page. (Mallerin.) Plant Pat. 594. This is that rare beauty, a pure white, fragrant Hybrid Tea Rose. The petals of the beautifully modeled blooms are as white as alabaster, with a live, satiny sheen. \$1.50 ea.; 3 for \$4.

★**CHARLOTTE ARMSTRONG.** H.T.

(Lammerts.) Plant Pat. 455. A charming Rose aristocrat which had top scores in official test gardens of All-America Rose Selections and now has top popularity with home gardeners. Long, slender, rose-red buds open to extra-large blooms of deep, glowing rose, sometimes very dark rose-red. Handsome, upright plants with long, strong flower stems. A superior Rose which is always beautiful. \$1.50 ea.; 3 for \$4.

★**CRIMSON KING.** H.T. See picture on back cover page. (Kordes.)

Velvety crimson. This is a worthy addition to the list of best red Hybrid Teas, very fragrant and a deep, brilliant crimson in color. Blooms repeat all summer and fall. When cut as buds they last well and will fill a room with their delightful Damask Rose fragrance. \$1.50 ea.; 3 for \$4.

★**DIAMOND JUBILEE.** H.T. Propagation Rights Reserved. All-America Award winner for 1948.

This new winner is a Rose to be jubilant about—an exceptionally good plant which is lavish with its lovely blooms of soft peach-gold. The petals have a wonderfully heavy texture, giving flowers that open slowly and last well on the bush or when cut. Blooms are double, high centered and fragrant. In habit of growth, vigor and disease resistance, the plant approached perfection throughout its trials. The stems are long and straight, well covered with rich dark green foliage. \$2 ea.; 3 for \$5.



©

★**Ernie Pyle.** New. \$1.50 ea.

★**ERNIE PYLE.** H.T. (Boerner.) Plant Pat. 673. Warm rose-pink flowers of good size and fine clear color distinguish this new Rose named to honor one of America's best-loved war correspondents. A bushy, vigorous, healthy plant of medium height, it was developed from the hardy wild Rose of Alaska. Opening blooms are cup-shaped, suffused with yellow at the base of each petal; slow opening, long lasting, fine for cutting. \$1.50 ea.; 3 for \$4.

Rose Index, Page 23

THE CONARD-PYLE CO.

to Good Roses

1947



THE NOVELTIES



★Grande Duchesse Charlotte. A Rose aristocrat of matchless beauty. \$1.50 ea.



★Lowell Thomas. \$1.50 ea.

★**LOWELL THOMAS.** H.T. (Mallerin.) Plant Pat. 595. The vibrant lemon-chrome color, vigorous growth and general air of optimism about this glorious new Rose make it suitable to bear the dynamic name "Lowell Thomas."

The 25-petaled blooms open from beautiful buds with high-cupped centers, the petals rolling outward to make magnificent, glowing flowers over 4 inches across when fully open. Plants sturdily upright, with good foliage. \$1.50 ea.; 3 for \$4.

© C. P. CO.

★**GRANDE DUCHESS CHARLOTTE.** H.T. (Ketten.) Plant Pat. pending. This Rose is a delightful new shade of red, as shown in the above picture. The beautiful, long, streamlined buds are burnt-carmine and open to firm-petaled blooms of a lovely begonia-rose, with the petals artistically recurved. The plant is unusually graceful in growth and the foliage shows good resistance to disease. \$1.50 ea.; 3 for \$4.

★**HEART'S DESIRE.** H.T. (Howard.) Plant Pat. 501. Beautiful form and heavy petalage distinguish this rich scarlet Rose. Great, streamlined buds come on erect stems, excellent for cutting. Delightful fragrance adds to its charm; a small bouquet will fill a room with fragrance. \$1.50 ea.; 3 for \$4.

★**HORACE McFARLAND.** H.T. See picture on back cover page. (Mallerin.) Plant Pat. 730. Deep apricot-colored buds open a rich buff-salmon which changes slowly to a pleasing coral-pink. Large flowers, 40 to 45 petals, very firm and long lasting. Strong, straight stems on rather low, upright, compact plants. A "front-row" Rose, unsurpassed for beautiful exhibition form and glorious color. Buds open slowly and tend to come in constant succession—each one a gem. \$1.50 ea.; 3 for \$4.

★**KATHERINE T. MARSHALL.** H.T. (Boerner.) Plant Pat. 607. Named to honor the wife of America's great General George T. Marshall. This sparkling, warm pink Rose comes on magnificent, erect-growing, very hardy plants with profuse, dark green foliage. The large, cupped flowers have heavy petals of coral-pink, with a golden glow at the base of each. Fruity fragrance. Growth and foliage are equal to the renowned Radiance and the beautiful blooms come freely. \$1.50 ea.; 3 for \$4.

Rose Index, Page 23

Star Rose-Growers ★ West Grove, Pa.

3 LEADING NEW ROSES \$3.95

1 each, ★Ernie Pyle, ★Grande Duchesse Charlotte and ★Lowell Thomas. (See all 3 pictured here.)

ASK FOR OFFER 105

★**HIGHLAND PARK.** H.T. (Mallerin.) A beautiful, silvery salmon-pink variety which produces its fine blooms on vigorous, healthy plants. A really choice Rose for those who appreciate delicate colors and full-petaled varieties. \$1.50 ea.; 3 for \$4.

★Highland Park. \$1.50 ea.

© C. P. CO.





STAR GUIDE

Fall

CREAM OF

AARS MEANS: Roses marked with this symbol are those recommended by ALL-AMERICA ROSE SELECTIONS, after two-year trials in a group of test gardens located in many different zones of climate, from the Atlantic to the Pacific and from Minnesota to the Gulf. Any Rose receiving this award has proved its real superiority as a garden Rose.

TWO NEW, 1948, AWARD WINNERS

AARS ★**NOCTURNE.** H.T. (Swim.) Plant Pat. 713. Perfect, long red buds open to blooms of bright cardinal-red with dark shadings, somewhat lighter during the hottest part of summer. A magnificently vigorous plant, like that of the great Rose Charlotte Armstrong, which is one of its parents. A Connecticut rosarian characterizes Nocturne as having "the stem of Etoile de Hollande, the color density of Crimson Glory, the form and fragrance of Heart's Desire." \$2 ea.; 3 for \$5.

AARS ★**SAN FERNANDO.** H.T. (Western Rose Co.) Plant Pat. pending. A magnificent Rose of glowing currant-red. Beautiful form in both bud and bloom, with unusually heavy texture. Superior disease resistance. And *fragrant!* If you have been wishing for more fragrant Roses, try San Fernando—as richly perfumed as any old-fashioned Rose in Memory's garden. \$2 ea.; 3 for \$5.



© ★Mme. Chiang Kai-shek. \$1.50 ea.

★**MME. CHIANG KAI-SHEK.** H.T. (Duehrsen.) **AARS** Plant Pat. 664. Large, pointed, ivory buds open to 4½-inch spiral flowers of moonlight-yellow tint with creamy outer petals. The magnificent 35-petaled flowers come freely on vigorous, upright plants with heavy, bronzy canes and when fully open have an attractive mass of rich golden anthers on filaments which match the petals. \$1.50 ea.; 3 for \$4.

★**MME. MARIE CURIE.** H.T. (Gaujard.) Plant **AARS** Pat. 727. Buds of bright, clear daffodil-yellow open glowing chrome-yellow and come freely on upright, vigorous plants. The 25-petaled, sweetly fragrant flowers age to rich cream before the petals fall. \$1.50 ea.; 3 for \$4.

★**MARK SULLIVAN.** H.T. (Mallerin.) Plant Pat. 599. This is one of the most spectacular of the newly developed multicolors. It is excellent for adding rich splashes of color to your garden. The blooms show a remarkable blending of color tones, rich gold heavily veined and shaded with deep rose-pink and cerise. \$1.25 ea.; 3 for \$3.35.

★Mark Sullivan. \$1.25 ea.



© C.-P. CO.

© ★Mary Margaret McBride. \$1.50 ea.



★**MARY MARGARET McBRIDE.** H.T. (J. H. Nicolas.) Plant Pat. 537. This exhibition-type flower of lovely form is a shining, pure rose-pink. The long, firm buds have a yellow base and open to very double, 45-petaled blooms with a glowing rose-pink color. The petals stay upright and hide the center of the flower but the edges recurve gracefully to add to the charm of this Rose. It withstands the heat of warmer sections of the country particularly well. \$1.50 ea.; 3 for \$4.

to Good Roses

1947



THE NOVELTIES



©
★**Mirandy.** H.T. (Lammerts.) Plant Pat. 632.
\$1.50 ea.

★**MIRANDY.** H.T. (Lammerts.) Plant Pat. 632. The first-place winner in the two-year All-America Rose Competition for 1945. The illustration shows the superb form and glamorous coloring of this great new Rose which does not have to struggle for top place; it starts there and is destined to be a most popular crimson Hybrid Tea Rose for years to come.

The huge, 50-petaled, deep crimson flowers open slowly from exquisitely modeled, ovoid buds, often long-pointed, and filled with rich, penetrating Damask fragrance. In hot, moist atmospheric conditions the aging flowers turn to a pleasing, popular Dubonnet wine color.

In our Rose-fields this marvelous Rose blooms continuously from early in June throughout the hot summer months until stopped by hard frosts. \$1.50 ea.; 3 for \$4.

★**MRS. PAUL R. BOSLEY.** H.T. (Bosley.) Plant Pat. 441. An unusually large number of fine new yellow Roses have been introduced recently. Among them, Mrs. Paul R. Bosley should not be overlooked. An exhibition type, with high-centered blooms held firm and erect above the dark, leathery foliage. Fragrant. This is a clear yellow sport of the magnificent and well-known Rose, Mme. Joseph Perraud. \$2 ea.; 3 for \$5.

★**NARZISSE.** H.T. (Krause.) Fine light yellow. This is the most superb maize-yellow variety that has yet appeared. The blooms are a marvel for size; big, streamlined buds of apricot-yellow open to massive flowers of maize-yellow. Sturdy, tall plants with large, glossy foliage. A prize-winning exhibition Rose. \$1.25 ea.; 3 for \$3.35.

★**PEACHBLOW.** H.T. (Coddington.) Beautifully modeled, fragrant, 20-petaled blooms of peach-pink with golden base, flushed and veined rose-pink. An exquisite cut-flower, persistent in bloom, long lasting on the bush and when cut. \$1.50 ea.; 3 for \$4.

★**RUBAIYAT.** H.T. (McGredy.) Plant Pat. pending. Brilliant cerise-red. The new 1947 All-America award winner. It has a graceful, long, shapely bud and a wealth of old-Rose fragrance. The shining, very bright cerise-red color in the heart of the half-open bloom is accented by the reverse of the petals, which is several shades lighter. The extra-large flowers are borne in profusion on long, upright stems. The plant is tall and vigorous, with luxuriant dark green foliage. A remarkable feature of Rubaiyat is that it actually deepens in color as it opens, the bud being appreciably lighter in color. Rubaiyat was so named because its profuse and repeated flowering suggested the line from the RUBAIYAT of Omar Khayyam: "Morning a thousand Roses brings." \$2 ea.; 3 for \$5.

©
★**Rubaiyat** 1947
All-America.
\$2 ea.



3 NEW PRIZE WINNERS \$5.50

Each a different shade of red

- ★**Nocturne.** Plant Pat. 713. Cardinal-red.
- ★**Rubaiyat.** Plant Pat. pending. Cerise-red.
- ★**San Fernando.** Plant Pat. pending. Currant-red.

These are excellent to plant as a group—each a different, yet harmonious shade that accents the others in the garden and in bouquets.

All 3 are new All-America award winners.

ASK FOR OFFER 107

Rose Index, Page 23

Star Rose-Growers ★ West Grove, Pa.



EVERBLOOMING STAR ROSES



★Ami Quinard. \$1.15 ea.

★**AMI QUINARD.** H.T. Black-lustered red. From dainty buds of deep maroon, ideal for boutonnieres, a beautiful urn-shaped flower unfolds. An old favorite, the petals are like shining crimson velvet enriched with a blackish sheen; a center of golden anthers in rich contrast to the dark, velvety petals. Fragrant and free in bloom. \$1.15 ea.; 3 for \$3.

4 OF THE FINEST HEADLINE OFFER \$5.25

	Page	Each
★Angels Mateu. Plant Pat. 174. Luscious orange-rose.	8	\$1.50
★Crimson Glory. Plant Pat. 105. Deep crimson.	9	1.50
★Eclipse. Plant Pat. 172. Golden yellow.	9	1.35
★Good News. Plant Pat. 426. Copper- to shell-pink.	10	1.50

4 outstanding varieties, each a leader in its color class. This is an offer not to be missed. They make a superior gift selection.

ASK FOR OFFER 108

★**ANGELS MATEU.** H.T. Plant Pat. 174. Orange-rose. Here is one of the most charming of the Ever-blooming Roses with a color that is really enchanting—a luscious orange-rose, distinct from all others. The flowers with their delicious red-raspberry fragrance are large, full-petaled and make fine exhibition blooms. \$1.50 ea.; 3 for \$4.

★Angels Mateu. \$1.50 ea.



© C. P. CO.



★California. \$1.50 ea.

★**CALIFORNIA.** H.T. Plant Pat. 449. The color is a glorious shade of ruddy orange, toned with saffron-yellow, with the exterior of the broad, firm petals overlaid with saffron-rose. Buds are long and pointed; flowers are enormous in size, reaching a diameter of 5 to 6 inches. Growth vigorous, with healthy, glossy green foliage. \$1.50 ea.; 3 for \$4.

★**CATHRINE KORDES.** H.T. Carmine-scarlet, a glowing color. Large and full-petaled. Visitors to our Rose-fields are always attracted by its glowing beauty. \$1.15 ea.; 3 for \$3.

★**CHRISTOPHER STONE.** H.T. See color page 13. Scarlet-crimson. A real treasure for any garden. Notable for alluring Damask fragrance and almost continuous bloom. Color is vivid scarlet in June, which becomes deep crimson with velvety, blackish shadings in the fall. \$1.15 ea.; 3 for \$3.

★**CONDESA DE SASTAGO.** H.T. See color page 13. Bicolor. Delightfully fragrant flowers of yellow and raspberry-red are produced profusely on vigorous, healthy plants. Ranks very high in preference list of experienced amateurs. Known from California to Cairo, and all points between, as one of the most colorful garden Roses, \$1.15 ea.; 3 for \$3.

Rose Index, Page 23



© ★Countess Vandal. \$1.35 ea.

★**COUNTESS VANDAL.** H.T. Plant Pat. 38. Copper and salmon. A charming Rose, from the first tints of color on the large, long, tapering buds until the flower opens and ages and the petals fall. The streamlined buds are orange-copper and open to perfumed, exquisitely formed blooms of copper, salmon and gold. \$1.35 ea.; 3 for \$3.50.


★**CRIMSON GLORY.** H.T. Plant Pat. 105. Deep crimson. A "glory" Rose, glorious in its perfect form, its size, and its fragrance. A splendid plant, vigorous and exceptionally resistant to disease. Its large buds of typical urn shape open into full, well-formed, delightfully fragrant blooms of a deep, vivid crimson, shaded ox-blood-red and finished with a velvety nap. Many people have said that if they could have but one Rose, this would be it. It is the top-ranking, standard red Rose in America, as rated from reports by American Rose Society members in the "Proof of the Pudding" section of Rose Society Annuals. \$1.50 ea.; 3 for \$4.

★Crimson Glory. \$1.50 ea.
One of America's favorite red Roses.



©

★**DAINTY BESS.** H.T. Blush-pink. Dainty indeed in form, color, and delicate wild-rose fragrance. The greatest charm of this Rose, however, is the mass of long, wine-red filaments which contrast so artistically with the soft blush-pink petals. Single. It has no rival. \$1.15 ea.; 3 for \$3.

★**DICKSONS RED.** H.T. Plant Pat. 376. Scarlet.  Noted for large, magnificently formed, glowing scarlet, delightfully fragrant blooms that hold their color in the hottest sun. This is one of the finest of the red Hybrid Teas. \$1.35 ea.; 3 for \$3.50.

★**DOROTHY JAMES.** H.T. Chamois-pink. This large-flowered, two-toned Rose opens from an ovoid bud of carmine-rose to a great 50-petaled bloom of soft chamois-pink. \$1.15 ea.; 3 for \$3.

★**DUQUESA DE PENARANDA.** H.T. Copper-apricot. Long-pointed buds of apricot-orange open to sweetly perfumed, artistic blooms of soft coppery apricot. The color becomes richer in the fall—a luscious cinnamon-peach shade—but it is lovely throughout the entire season and noted for almost continuous bloom. \$1.15 ea.; 3 for \$3.

© ★Eclipse. \$1.35 ea.



★**ECLIPSE.** H.T. Plant Pat. 172. Golden yellow. Distinctly different from any other Rose, with "Super-streamlined" buds which often exceed 2 inches in length, ornamented with narrow, branching sepals which contrast harmoniously with the gold of the petals. It is most prolific, the beautiful tapering buds coming in quantities on rigid, upright stems on a vigorous plant with disease-resistant foliage. \$1.35 ea.; 3 for \$3.50.

★**EDITOR McFARLAND.** H.T. See color page 12. Deep pink. Vigorous, healthy, upright plants are free with beautifully modeled buds and fragrant blooms of deep pink on strong, wiry stems. The flowers keep their form and color for days when cut. \$1.15 ea.; 3 for \$3.

★**ETERNAL YOUTH.** H.T. Plant Pat. 332. Clear pink; exquisitely formed. \$1.35 ea.; 3 for \$3.50.

★**ETOILE DE HOLLANDE.** H.T. Crimson. This Rose charms continuously with its delightful crimson color, its form, long cutting stems, vigorous, healthy growth, and intense true Rose perfume. One of the finest, richly fragrant everblooming red Roses. \$1.15 ea.; 3 for \$3.



STAR GUIDE

Fall

EVERBLOOMING



★Faience. \$1.15 ea.

★**FAIENCÉ.** H.T. Two-tone peach-pink and yellow. Beautifully modeled buds of yellow, lightly brushed with carmine, open to 50-petaled blooms with rich yellow base that shades gradually to peach-pink at the tips. A most satisfactory Rose the entire growing season for it blooms so freely and the beautifully tinted flowers last long on the bush or when cut. \$1.15 ea.; 3 for \$3.



★Golden Sastago. \$1.15 ea.

★**GOLDEN SASTAGO.** H.T. Buttercup-yellow. A sport of the great Condesa de Sastago. This gleaming yellow fragrant flower is a continuous joy to the gardener. Of fine, upright form, it is noted for robust growth and freedom of bloom. \$1.15 ea.; 3 for \$3.

★**GOOD NEWS.** H.T. See color illustration page 12. Plant Pat. 426. Buds of deep coppery pink open slowly to great 60-petaled blooms with a glowing, coppery center, toning to shell-pink on the outer petals. Rich tea fragrance. A vigorous, healthy plant almost continuous in bloom. We receive most enthusiastic reports about Good News. An excellent general-purpose Rose. \$1.50 ea.; 3 for \$4.

★**HOME SWEET HOME.** H.T. Large flowers of glowing pink, each petal delicately edged with silvery pink. Full-petaled blooms of peony form with intense, true Rose fragrance and an "old-fashioned" charm. \$1.50 ea.; 3 for \$4.

★**JOANNA HILL.** H.T. Yellow. Attractive buds of orange-yellow open to large, double flowers with an orange center, paling to cream color at the edges of the petals. Borne on long stems and very popular for cut-flowers. \$1.15 ea.; 3 for \$3.

★**KAISERIN AUGUSTE VIKTORIA.** H.T. Cream-white. Long, shapely buds open to delightfully scented, cream-white flowers with a slight lemon tint in the center. Very double flowers on plants of medium height. This Rose was introduced in 1891 and it is as much loved today as ever. It is still the favorite white of many people. \$1.15 ea.; 3 for \$3.

4 FAVORITES \$4.15

	Page	Each
★Betty Uprichard. Carmine and salmon bicolor.	8	\$1.15
★Golden Sastago. Buttercup-yellow.	10	1.15
★Kaiserin Auguste Viktoria. White.	10	1.15
★President Macia. Large, two-toned pink.	14	1.15

ASK FOR OFFER 110

★**GIRONA.** H.T. See color illustration at bottom of page 13. Multicolored. Tyrian-rose and soft golden yellow in a lovely color blend. The petals are of heavy texture and the blooms are President Herbert Hoover type. One of the most richly fragrant of Roses. \$1.15 ea.; 3 for \$3.

★**GLOAMING.** H.T. Plant Pat. 137. Sunset-pink. A particularly lovely color, shading from fawn-orange to an unusual pink overlaid with salmon; like tints of an autumn sunset. \$1.35 ea.; 3 for \$3.50.

© ★Gloaming. \$1.35 ea.





STAR ROSES

★**LADY ASHTOWN.** H.T. Carmine-pink. The large, long-pointed buds open to perfect carmine-pink blooms with a golden underglow. One of the best and very popular. \$1.15 ea.; 3 for \$3.

★**LUNA.** H.T. Moonlight-yellow. The long, delicate yellow buds open to large, delightfully fragrant blooms of moonlight-yellow which age to soft cream-white. \$1.15 ea.; 3 for \$3.

★**MME. BUTTERFLY.** H.T. Pink and gold. Beautifully modeled flowers of tender pink, salmon, cream, and gold. Highly scented and long lasting except in very hot, dry weather. The blooms are superb in spring and fall. \$1.15 ea.; 3 for \$3.

★**MME. COCHET-COCHET.** H.T. See color illustration page 12. Plant Pat. 129. Coppery pink. From the time of its introduction this lovely Rose has been a continuous success. The long, pointed buds of coppery pink open to large, semi-double, artistic flowers that simply glow with reflected gold on the inside petals, the whole effect being a coppery pink. Rich honey-like fragrance. \$1.50 ea.; 3 for \$4.

© C.P. CO.



★Mme. Henri Guillot. \$1.50 ea.

★**MME. HENRI GUILLOT.** H.T. Plant Pat. 337. This outstanding beauty has no rival in form or color. Large, firm-petaled flowers come singly on strong plants with extra-large, shiny foliage. Long, slender buds open to exquisitely formed, fragrant, urn-shaped blooms of raspberry-pink with a golden base, changing to watermelon-pink. \$1.50 ea.; 3 for \$4.

★**MME. JOSEPH PERRAUD.** H.T. Buff. The long, pointed, opening buds have delightful glowing yellow sunset shades which change to nasturtium-buff as the sunset flowers slowly unfold. \$1.15 ea.; 3 for \$3.

★**MME. JULES BOUCHE.** H.T. The large buds of creamy white open with a dainty flush of pink in the center, changing to all white. Sweet-scented. Vigorous. \$1.15 ea.; 3 for \$3.

Rose Index, Page 23

Star Rose-Growers ★ West Grove, Pa.



★Margaret McGredy. \$1.15 ea.

★**MARGARET MCGREDY.** H.T. Orange-scarlet, aging to a pleasing carmine-rose. Vigorous plants give a constant production of blooms from June until hard frost. Fragrant. \$1.15 ea.; 3 for \$3.

5 BRILLIANT ROSES \$6.15

A selection for adding vivid splashes of glorious color to your garden. These are all kinds which will attract the eyes of your most casual garden visitors and furnish striking cut-flower arrangements.

All are kinds that make good plants with abundant bloom.

	Page	Each
★ California. Plant Pat. 449. Rosy orange toned with gold.	8	\$1.50
★ Dicksons Red. Plant Pat. 376. Glowing scarlet.	9	1.35
★ McGredy's Sunset. Plant Pat. 317. Sunshine-yellow flushed carmine.	11	1.35
★ Signora. Plant Pat. 201. Mandarin-orange and salmon.	15	1.35
★ Countess Vandal. Plant Pat. 38. Two-toned copper-rose and peach-pink	9	1.35

ASK FOR OFFER 111

★**MCGREDY'S SUNSET.** H.T. Plant Pat. 317. Yellow. A Rose of unusual charm. The full-petaled fragrant flowers of clear, sunshiny yellow are penciled with carmine and come freely on vigorous, branching plants. \$1.35 ea.; 3 for \$3.50.

★McGredy's Sunset. \$1.35 ea.





★ Poinsettia.
\$1.15 ea.
Desc. P. 14.



12 TRIED AND TRUE HYBRID TEAS

Editor McFarland. \$1.15 ea.

For years we have made a specialty of a "Star Dozen" which are carefully chosen in advance, so that enough of them can be popular specialty of ours. The kinds selected are those which experts. The brief descriptions of each, given below, are mainly of the most free-blooming, vigorous and dependable that we real beauty. They were selected for this set because of their

Because these sets can be quickly made up, with a minimum you a real savings. All are exactly the same grade of plants as



© C.P. CO.

Desc.
P. 11.

★ Mme. Cochet-Cochet. \$1.50 ea.

★ANGELS MATEU. Plant Pat. 174. A rich, luscious orange-rose color. (See picture and desc., p. 8.)

★CHRISTOPHER STONE. Vivid scarlet-crimson; darker in the fall. (Picture at right below; desc. p. 8.)

★CONDESA DE SASTAGO. A most popular bicolor; yellow and raspberry-red. (Picture at right; desc. p. 8.)

★CRIMSON KING. One of the great Roses; very dark, velvety crimson. (See back cover and p. 4.)

★EDITOR MCFARLAND. A lasting, deep pink. (Pictured above; desc. p. 9.)

★GIRONA. Famous for fragrance and the rich blending of its colors: golden yellow shading outward to Tyrian-rose (Pictured below; desc. p. 10.)

ASK FOR O

1 each of above 12 \$12.75
(Value \$15.30)

★Good News.
\$1.50 ea.

Desc. P. 10.



© C.P. CO.

★Girona. \$1.15 ea.





★ DOZEN ★



**12
QUALITY
STAR ROSES**

\$12.75 Postpaid

★
Soeur Therese.
\$1.15 ea.

Desc.
P. 15.

Desc. P. 9.

lection of selected, fine, everblooming Roses. The varieties
e grown to fill the orders for this well-known and deservedly
have proved to do well everywhere, for beginners as well as
y limited to color because every one of these varieties is one
ould select. All give well-formed blooms of good size and
uperiority on these points.
m of extra handling after the plants are dug, the price gives
those sold separately.



Desc.
P. 8.

Condesa de Sastago. \$1.15 ea.

★**GOOD NEWS.** Plant Pat. 426. A most satisfactory
Rose. Coppery pink center toning to creamy shell-pink.
A consistent blue-ribbon winner. (Picture left below; desc.
p. 10.)

★**MME. COCHET-COCHET.** Plant Pat. 129. Many
people tell us this is their favorite copper-pink garden Rose.
(Picture at left; desc. p. 11.)

★**MRS. P. S. DU PONT.** Golden yellow. Produces
masses of bloom. (Picture and desc. p. 14.)

★**NARZISSE.** Maize-yellow blooms of exhibition size
and form. (Desc. p. 7.)

★**POINSETTIA.** Bright poinsettia-red. (See left above
and p. 14.)

★**SOEUR THERESE.** Candelabra of glowing yellow
blooms top the tall plants. (See right above and p. 15.)

FER 112

1 each of above 12 \$12.75
(Value \$15.30)

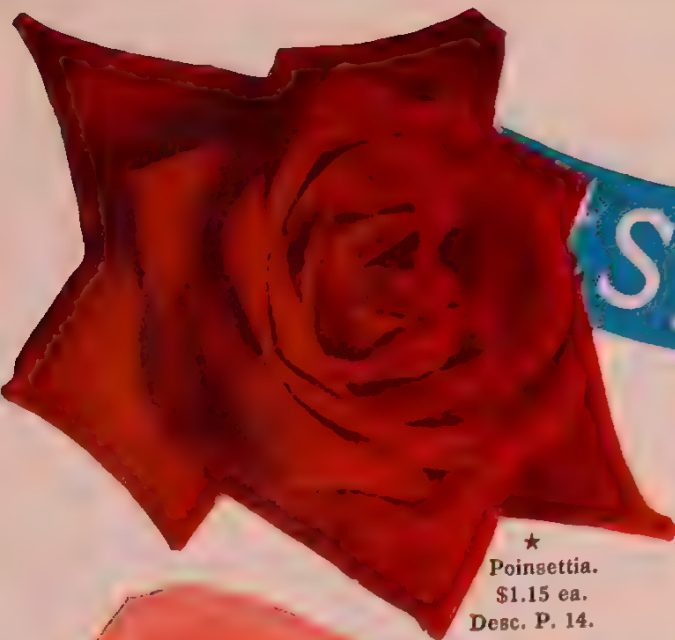


Desc. P. 10.

Desc.
P. 8.

★ Christopher
Stone.
\$1.15 ea.





★ Poinsettia.
\$1.15 ea.
Desc. P. 14.

STAR



DOZEN

12 TRIED
AND TRUE
HYBRID TEAS

12
QUALITY
STAR ROSES

\$12.75 Postpaid



★ Soeur Therese.
\$1.15 ea.

Desc.
P. 15.

Editor McFarland. \$1.15 ea. Desc. P. 9.

For years we have made a specialty of a "Star Dozen" collection of selected, fine, everblooming Roses. The varieties are carefully chosen in advance, so that enough of them can be grown to fill the orders for this well-known and deservedly popular specialty of ours. The kinds selected are those which have proved to do well everywhere, for beginners as well as experts. The brief descriptions of each, given below, are mainly limited to color because every one of these varieties is one of the most free-blooming, vigorous and dependable that we could select. All give well-formed blooms of good size and real beauty. They were selected for this set because of their superiority on these points.

Because these sets can be quickly made up, with a minimum of extra handling after the plants are dug, the price gives you a real savings. All are exactly the same grade of plants as those sold separately.



© C.P. CO.

Desc.
P. 11.

★ Mme. Cochet-Cochet. \$1.50 ea.

★ANGELS MATEU. Plant Pat. 174. A rich, luscious orange-rose color. (See picture and desc., p. 8.)

★CHRISTOPHER STONE. Vivid scarlet-crimson; darker in the fall. (Picture at right below; desc. p. 8.)

★CONDESA DE SASTAGO. A most popular bicolor; yellow and raspberry-red. (Picture at right; desc. p. 8.)

★CRIMSON KING. One of the great Roses; very dark, velvety crimson. (See back cover and p. 4.)

★EDITOR MCFARLAND. A lasting, deep pink. (Pictured above; desc. p. 9.)

★GIRONA. Famous for fragrance and the rich blending of its colors: golden yellow shading outward to Tyrian-rose (Pictured below; desc. p. 10.)

★GOOD NEWS. Plant Pat. 426. A most satisfactory Rose. Coppery pink center toning to creamy shell-pink. A consistent blue-ribbon winner. (Picture left below; desc. p. 10.)

★MME. COCHET-COCHET. Plant Pat. 129. Many people tell us this is their favorite copper-pink garden Rose. (Picture at left; desc. p. 11.)

★MRS. P. S. DU PONT. Golden yellow. Produces masses of bloom. (Picture and desc. p. 14.)

★NARZISE. Maize-yellow blooms of exhibition size and form. (Desc. p. 7.)

★POINSETTIA. Bright poinsettia-red. (See left above and p. 14.)

★SOEUR THERESE. Candelabra of glowing yellow blooms top the tall plants. (See right above and p. 15.)

ASK FOR OFFER 112

1 each of above 12 \$12.75
(Value \$15.30)

1 each of above 12 \$12.75
(Value \$15.30)



Desc.
P. 8.

Condesa de Sastago. \$1.15 ea.



★ Good News.
\$1.50 ea.

Desc. P. 10.

© C.P. CO.



★ Girona. \$1.15 ea.

Desc. P. 10.



Desc.
P. 8.

★ Christopher Stone.
\$1.15 ea.





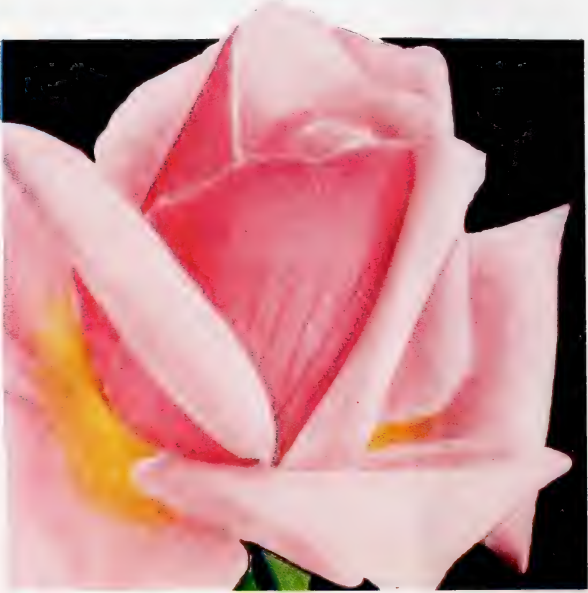
STAR GUIDE

Fall

EVERBLOOMING

★**MISS ROWENA THOM.** H.T. Rose-pink. This Rose has the healthy, vigorous growth of Radiance, which was one of its parents, and it is notably free in bloom. The long-pointed buds open to enormous, delightfully fragrant, rose-pink blooms which often measure 5 inches across and are fine for cutting. \$1.15 ea.; 3 for \$3.

★**MRS. E. P. THOM.** H.T. Yellow. The buds are long-pointed and open to well-formed blooms of clear yellow without any carmine markings. Experienced rosarians consider this Rose as among the best of the clear yellow everblooming varieties, both for bedding and for cut-flowers, \$1.15 ea.; 3 for \$3.



★President Macia. \$1.15 ea.

★**PRESIDENT MACIA.** H.T. Two-tone pink. Rich pink buds, notably long, firm and pointed, open with the same rich pink outside and with the inside of the petals a strongly contrasting flesh-pink. A beautiful, large Rose. \$1.15 ea.; 3 for \$3.

★**RADIANCE.** H.T. Rose-pink. The two-toned pink, cupped flowers have a pungent, true Rose fragrance. In continuous demand for its vigorous, healthy growth and remarkable freedom of bloom. \$1.15 ea.; 3 for \$3.

★**RAMON BACH.** H.T. Plant Pat. 366. Apricot-buff. The large, artistic blooms are "masterpieces." This unusually large, full-petaled Rose, with agreeable fruit-like fragrance, comes singly and the opening blooms show apricot-buff on the back of the petals with salmon-pink on the inside. \$1.25 ea.; 3 for \$3.35.

3 Distinguished Roses \$3.15

Old reliable kinds, indispensable for beginner or connoisseur.

	Page	Each
★Ami Quinard. The darkest red.....	8	\$1.15
★Mrs. P. S. du Pont. Yellow.....	14	1.15
★President Hoover. Tall multicolor.....	14	1.15

ASK FOR OFFER 114

Rose Index, Page 23

THE CONARD-PYLE CO.



★Mrs. Pierre S. du Pont. \$1.15 ea.

★**MRS. PIERRE S. DU PONT.** H.T. Golden yellow. A universally satisfactory Rose which produces more blooms per plant per season than any other golden yellow variety. Nicely formed, long-pointed buds and fragrant, double flowers. \$1.15 ea.; 3 for \$3.

★**MRS. SAM MCGREDY.** H.T. Scarlet-orange. Perfectly modeled flowers with Sweetbriar fragrance and rich coloring of scarlet and orange are usually borne singly and erect on beautiful plants with bronzy stems and shiny bronzy foliage. A very popular, highly rated Rose. \$1.15 ea.; 3 for \$3.

★**POINSETTIA.** H.T. See color page 12. Scarlet. You will be charmed with this beauty, with its lovely, well-formed, long buds and richly colored flowers of poinsettia-scarlet. The large, brilliant blooms are freely produced on erect, healthy plants. We have received many enthusiastic reports on this fine Rose. \$1.15 ea.; 3 for \$3.

★**PRESIDENT HERBERT HOOVER.** H.T. Multicolored. The large, well-modeled, fragrant blooms of scarlet, yellow, cerise, and flame colors come singly on erect, firm stems. Tall, vigorous plants. A good Rose for cutting. \$1.15 ea.; 3 for \$3.



★President Herbert Hoover. \$1.15 ea.



STAR ROSES

★**RED RADIANCE.** H.T. Cerise-red. A sport of Radiance, it has the same form, habit of growth, fragrance, and healthy foliage. The difference is in the color, which is an even shade of cerise-red. \$1.15 ea.; 3 for \$3.

★**ROME GLORY.** H.T. Plant Pat. 304. Rose-red. This tall-growing variety holds its noble buds and mammoth, long-lasting, fragrant blooms erect on long, strong stems. \$1.50 ea.; 3 for \$4.

★**SIGNORA.** H.T. Plant Pat. 201. Bicolor. Long, tapering buds of brownish orange are followed by great blooms of mandarin-orange and salmon. Praised from Maine to California. \$1.35 ea.; 3 for \$3.50.

★**SNOWBIRD.** H.T. White. Snow-white from the bud until the petals fall. For bedding it is unsurpassed. The fragrant, pure white flowers are perfectly formed, full petaled and are often 4 inches across. \$1.15 ea.; 3 for \$3.

★**SOEUR THERESE.** H.T. See color page 13. Buttercup-yellow. This is the most astonishing variety in the yellow class, for it blooms in candelabras (not clusters) of from 5 to 15 flowers, forming on top of sturdy canes that hold the blooms erect. Each flower is fine for cutting as it comes on a wiry stem from 6 to 8 inches in length. Each perfectly formed, long-pointed yellow bud is richly marked with carmine but the open blooms are clear yellow. \$1.15 ea.; 3 for \$3.



© ★Rome Glory. \$1.50 ea.

★**TEXAS CENTENNIAL.** H.T. Plant Pat. 162. Brick-red. This richly fragrant, bright red variety is a sport of the great President Herbert Hoover Rose, and has all the good qualities of its parent. The tall plants are remarkably free in bloom. \$1.25 ea.; 3 for \$3.35.



★Talisman. \$1.15 ea.

★**TALISMAN.** H.T. Multicolored. Free in bloom. At its gayest it is a glorious combination of orange, yellow, and rose-red. It is one of the finest of all garden Roses for cutting, with its choice, distinctive form. The fragrant flowers are much more highly colored in autumn, when they simply eclipse the finest florists' blooms, so it is worth while pinching out all midsummer buds to get more bloom in the fall. \$1.15 ea.; 3 for \$3.

Rose Index, Page 23

Star Rose-Growers ★ West Grove, Pa.

4 WELL-KNOWN ROSES \$4.25

Always popular, with good reason. The perfect "starter set" for the beginning Rose gardener.

	Page	Each
★Mrs. E. P. Thom. Clear yellow.....	14	\$1.15
★Radiance. Two-toned, rich pink.....	14	1.15
★Red Radiance. Cerise-red.....	15	1.15
★Talisman. Brilliant multicolor.....	15	1.15

ASK FOR OFFER 115

★**THE DOCTOR.** H.T. Satiny pink. Known for gigantic blooms of superior quality and intense fragrance. \$1.15 ea.; 3 for \$3.

★**WHITE BRIARCLIFF.** H.T. Plant Pat. 108. An ideal white Rose for the garden and for cutting. The exquisite, long, streamlined buds are continuously produced. Fully double. \$1.35 ea.; 3 for \$3.50.

© ★White Briarcliff. \$1.35 ea.



Abundant Flowering



★Floradora. \$1.25 ea.

★**FLORADORA.** The gayest Floribunda of them all. It is spectacular, constantly in bloom and an entirely new shade in Roses—a brilliant cinnabar-red, as arresting under artificial light as in the garden. No matter where they are, Floradora blooms are always the eye catchers. 2½ to 3 ft. \$1.25 ea.; 3 for \$3.35.

★**BOUQUET.** See *illus. next page.* Clouds of brilliant rose-red blooms that look like camellias almost hide the foliage. Each branching cluster makes a long-lasting bouquet. Very effective in mass plantings. Growth 2 to 2½ feet, bushy and compact. \$1.15 ea.; 3 for \$3.

★**DONALD PRIOR.** Plant Pat. 377. This sparkling red, 12-petaled variety is a beautiful mate for Betty Prior for both grow to about 3½ feet and have large, shiny foliage. Dependable bloom all season. \$1.15 ea.; 3 for \$3.

★**BETTY PRIOR.** Plant Pat. 340. Large branching clusters of single blooms resembling red dogwood in shape, size and color. The plants are abundantly branched and continuous in bloom. Growth 3½ ft. \$1.15 ea.; 3 for \$3.

★Betty Prior. \$1.15 ea.



★Goldilocks. \$1.50 ea.

★**GOLDILOCKS.** Plant Pat. 672. Rich golden yellow. Buds shaped like Hybrid Teas open to very double blooms up to 3 inches across. Spreading, bushy plants, 2½ ft. Abundant bloom; fine plants, foliage and color. \$1.50 ea.; 3 for \$4.

★**GRUSS AN AACHEN.** Big, 60-petaled blooms, flesh-pink to creamy white. Fine 2-ft. plants. \$1.15 ea.; 3 for \$3.

3 Famous Floribundas \$3.50

Newer kinds that have won instant, widespread popularity.

★**Goldilocks.** Plant Pat. 672. Golden yellow.

★**Pinocchio.** Plant Pat. 484. Salmon-pink.

★**World's Fair.** Plant Pat. 362. Velvety crimson.

ASK FOR OFFER 116

★**KORALLE.** Wavy-petaled, rose-red blooms come in masses on erect plants about 2 feet high. \$1.15 ea.; 3 for \$3.

★Koralle. \$1.15 ea.



Floribundas



★Little Miss Muffett. \$1.15 ea.

★**LITTLE MISS MUFFETT.** Charming flowers like 20-petaled, coral-pink camellias come continuously in open, branching heads on sturdy, healthy plants. Growth 2 ft. \$1.15 ea.; 3 for \$3.

★**PERMANENT WAVE.** Plant Pat. 107. Wavy-petaled blooms of rich rose-pink, in clusters. Unusual, red-bronze buds. Growth 2 to 2½ ft. \$1.15 ea.; 3 for \$3.

★**POULSEN'S YELLOW.** Dainty, carmine-tinted buds and flowers of pure yellow, in lovely, open sprays. Height 2 to 2½ ft. \$1.15 ea.; 3 for \$3.

★**PINOCCHIO.** Plant Pat. 484. Pointed buds of salmon-pink flushed gold open to full-petaled blooms of soft, clear pink. Continuous bloom on shapely, free-branching plants with ample, dark green foliage. Excellent as a border plant. The dainty blooms, coming in sprays, are charming as cut-flowers. 20 to 24 inches. \$1.25 ea.; 3 for \$3.35.

★Pinocchio. \$1.25 ea.

©



©
C.P. CO.

★Red Ripples. \$1.25 ea.

★**RED RIPPLES.** One of the best. A clear, true red in both bud and bloom. Tall, upright plants; blooms well distributed. \$1.25 ea.; 3 for \$3.35.

★**SUMMER SNOW.** Plant Pat. 416. You need a good white to complete a planting of Floribundas, and here it is. 2 ft. \$1.15 ea.; 3 for \$3.

★**WORLD'S FAIR.** Plant Pat. 362. Large, velvety crimson flowers on 2 to 2½-ft. plants. \$1.25 ea.; 3 for \$3.35.

★**TOPAZ.** Polyantha. Plant Pat. 300. Dainty yellow buds and sulphur-yellow, starry blooms. Low, spreading; height 12 to 15 inches. \$1.25 ea.; 3 for \$3.35.

4 OF THE BEST \$4.25

Floribunda Roses are zooming in popularity. They are very satisfactory plants with their masses of bloom all spring, summer and fall on hardy, long-lived and attractive plants. Each of these 4 has a special charm: ★**Bouquet**, ★**Flora-dora**, ★**Koralle**, ★**Red Ripples**. All 4 are shown in color on these two pages. This is a good "trial collection" for those who have not yet grown these fine Roses. One of each for \$4.25.

ASK FOR OFFER 117

★Bouquet. \$1.15 ea. Desc. p. 16



REPEAT-BLOOMING CLIMBING ROSES

More Blooms per Ground Space Than with
Any Other Plant

The long canes of climbing Roses can produce the most amazing mass of bloom, on arches, trellises, garage walls, fences etc.

Climbing Roses usually bloom the second season after planting. Do not prune the first season's growth of the kinds offered here. Later, prune only enough to keep within bounds and to remove worn-out, dead wood.

★**MERMAID.** Immense, single blooms of sulphur-yellow with a glorified center showing a heavy cluster of rich golden anthers. Blooms steadily throughout the season. Foliage glistening, almost evergreen. Needs protection in the North and worth it as it is breathtakingly beautiful. \$1.50 ea.; 3 for \$4.

Plant Mermaid, Climbing Mrs. du Pont and Climbing Talisman in sheltered spots and protect in winter. Others withstand cold well, especially New Dawn and Prosperity, and all on the next page.



★Blaze. \$1.50 ea.

★**BLAZE.** Plant Pat. 10. Scarlet-crimson. This brilliant red Rose resembles Paul's Scarlet Climber in growth and bloom. The blazing color holds well even in hot sun, and the gorgeous show continues for weeks in June. Under favorable conditions it produces intermittent flowers later in the season. These later bloom-shoots come from the first eye below the June flower clusters, so cut the faded first blooms above that point to encourage later bloom. The re-bloom is better on well-established plants with heavy canes. \$1.50 ea.; 3 for \$4.

★**CLIMBING MRS. PIERRE S. DU PONT.** Golden yellow. Beautiful, golden yellow blooms as shown in illustration on page 14. \$1.50 ea.; 3 for \$4.

★**CLIMBING TALISMAN.** A climbing form of the famous Talisman Rose with the same multicolored blooms. See illustration, page 15. \$1.50 ea.; 3 for \$4.

★**DR. J. H. NICOLAS.** Plant Pat. 457. This modern, very double, large-flowered pillar Rose is sensational in the quantities of beautiful, fragrant, rose-pink flowers produced each year. The super-sized, 50-petaled blooms are like large Hybrid Teas and when they are spent just pinch them off and new flowers will form, but not as profusely as in June. \$1.50 ea.; 3 for \$4.



★New Dawn blooms from June to frost. \$2 ea.

★**NEW DAWN** (Everblooming Dr. W. Van Fleet). Plant Pat. 1. Blush-pink. Awarded the Bloomfield Gold Medal by the American Rose Society for "the best hardy Everblooming Climbing Rose ever produced anywhere in the world." This record remains unchallenged.

We have a specimen plant in our display garden with 12 to 15-foot canes, with rich green foliage, that year after year in June provides masses of lovely, pale pink, fragrant blooms, like Tea Roses, on long cutting stems, and repeats its bloom until hard frost and in normal seasons into November. \$2 ea.; 3 for \$5.

★**PROSPERITY.** White. Constantly in bloom, spring, summer and fall. Delightful, double flowers in clusters. A vigorous pillar Rose or can be grown as a tall, graceful shrub without support. Height 7 ft. \$1.50 ea.; 3 for \$4.

3 LEADING CLIMBERS \$4.35
(5\$ VALUE)

Garage walls, porches and property boundaries are perfect places for climbing Roses to display their wealth of bloom. These 3 favorite varieties are perfect for such locations.

★Blaze (brilliant red), ★Golden Climber (like long-stemmed, yellow Hybrid Teas), ★New Dawn (flesh-pink, everblooming.)

ASK FOR OFFER 118



★Dr. J. H. Nicolas. \$1.50 ea.

BEAUTIFUL HARDY CLIMBING ROSES

Add Variety of Flower Height in
Your Garden

Climbing Roses give a lift to a garden, adding variety with their height. Climbers bring blooms to a new, high eye level, serve as background for other flowers and are excellent for dividing areas and outlining property lines in the most pleasant way. These hardy climbers are all large-flowered kinds that give a glorious display.

★**AMERICAN PILLAR.** Midseason. Gay, single pink flowers with white centers in huge clusters on a vigorous plant. \$1.15 ea.; 3 for \$3.

★**CITY OF YORK.** A new white climber which is a welcome addition to its class. It is hardy and very strong-growing, able to cover a large area. The beautiful foliage fairly sparkles in the sunlight. In May and June it is an almost solid mass of bloom, from its very tip right down to the ground. The 3-inch, semi-double to double flowers of creamy white have a delightful fragrance which envelops the whole plant. \$1.50 ea.; 3 for \$4.

★**CLIMBING AMERICAN BEAUTY.** Early. Large, sweet-scented, deep rose-pink flowers. You can cut quantities of the long-stemmed, fully double blooms without spoiling the outdoor display. \$1.15 ea.; 3 for \$3.

3 YELLOW CLIMBERS \$4

We consider these the most satisfactory of the yellow climbers yet introduced. No climbing Rose of any color produces more perfectly formed, long-stemmed Rose blooms.

One each, ★**Doubloons**, ★**Golden Climber**, ★**King Midas**.

ASK FOR OFFER 119



★**Golden Climber.** \$1.50 ea.

★**GOLDEN CLIMBER (Mrs. Arthur Curtiss James).** Plant Pat. 28. Early. The clear yellow, Hybrid Tea flowers come on long stems. For maximum bloom train the canes horizontally and in full sun. \$1.50 ea.; 3 for \$4.

★**JACOTTE.** Early. A beautiful climber which is deservedly popular. The flowers are a rich shade of apricot with coppery red tints and are very fragrant. Open blooms are 3 inches or more in diameter. \$1.15 ea.; 3 for \$3.

★**KING MIDAS.** Plant Pat. 586. Early. Large, double, golden yellow blooms from pointed buds of golden yellow flushed with red. Vigorous in growth with dark green, leathery foliage—a beautiful foil for the large, slightly fragrant, yellow blooms. \$1.50 ea.; 3 for \$4.

★**MARY WALLACE.** Early. Vigorous plants are covered with large, cup-shaped flowers of glowing rose-pink. Very hardy. \$1.15 ea.; 3 for \$3.

★**PAUL'S SCARLET CLIMBER.** See *illus. below*. Midseason. Vivid scarlet and marvelously attractive when in full bloom. A row of Paul's Scarlet on a fence is breathtaking in beauty, and the colorful show keeps up for weeks. In favorable seasons this Rose repeats in the fall. The brilliant color does not burn or fade and the bloom in June is profuse. \$1.15 ea.; 3 for \$3.

★**SILVER MOON.** Midseason. White. Great, silvery white, semi-double blooms with a foil of dark, leathery foliage. \$1.15 ea.; 3 for \$3.

★**SPANISH BEAUTY (Mme. Gregoire Staechelin).** Early. Long-pointed, crimson buds open to deliciously perfumed, urn-shaped, pearl-pink blooms, the outside of the petals deeper pink. \$1.15 ea.; 3 for \$3.



★**Doubloons.** \$1.50 ea.

4 For Bushels of Bloom \$4.50

- ★**City of York.** An extra-fine, new white.
- ★**Climbing American Beauty.** A popular rose-pink.
- ★**Paul's Scarlet Climber.** A good, brilliant red.
- ★**Spanish Beauty.** Glorious, two-toned pink.

ASK FOR OFFER 119A

★**Paul's Scarlet Climber.** \$1.15 ea.



★**DOUBLOONS.** Plant Pat. 152. A lovely yellow, noted also for hardiness and vigorous, healthy growth; a fine all-purpose climber. Shapely buds and large, firm-textured blooms of saffron-yellow with clean, spicy fragrance. Blooms early and for a long season on 10 to 12-foot canes. \$1.50 ea.; 3 for \$4.

★**DR. W. VAN FLEET.** Flesh-pink. Very vigorous, with large, double, fragrant flowers. Blooms early and for a long time. Hardy, healthy and dependable, it is one of the best. \$1.15 ea.; 3 for \$3.

★**FLASH.** Plant Pat. 396. An early-blooming pillar. The lovely buds are yellow with a scarlet suffusion; they open to gleaming scarlet blooms, the underside of the petals yellow. \$1.25 ea.; 3 for \$3.35.

Hardy Perennials

All prices include delivery prepaid

Get an early start for next year's perennial blooms by planting this fall. Following is a carefully selected list of superior varieties for fall planting.

ANTHEMIS, Moonlight. Lovely 2½-inch, pale yellow daisies in quantity over a long period, starting in early summer. Good in the garden and for cutting. Finely cut foliage. One of the most hardy of all perennials. 50 cts. ea.; 3 for \$1.25.

AQUILEGIA (Columbine), Long-Spurred Hybrids. See illustration, next page. Gay and showy blooms in May and June, the airy flowers 2 to 3 feet high on long, wiry stems. Foliage lower, neat and beautiful at all times. Thrives in sun or shade. Assorted colors. 50 cts. ea.; 3 for \$1.25.

CARNATIONS. These resemble florist's Carnations but are fine, hardy garden plants. Long season of bloom; very fragrant.

Lucia. See illustration. 50 cts. ea.; 3 for \$1.25.

Silvermine. Double, white. June to Sept. 45 cts. ea.; 3 for \$1.10.

DIANTHUS (Garden Pinks). Single, fragrant flowers of exquisite form—Long blooming season; very long-lived plants for sunny, well-drained locations. 45 cts. ea.; 3 for \$1.10.

Meg Gardner. Red-centered white with delicately fringed petals.

Mrs. Back. Royal crimson center on white. Daintily scalloped.

Mrs. Wormald. Bright pink with a much darker eye.

OFFER 120A. 1 each of 3 Dianthus for \$1.10

COREOPSIS, Golden Shower. Has dainty, star-like, yellow flowers 1½ inches across, from June to frost, on erect 2-foot plants. Fine, disease-free foliage. 45 cts. ea.; 3 for \$1.10.

GYPSOPHILA (Baby's Breath), Rosy Veil. See illustration. A low-growing, double, pink variety of this dainty flower. Ideal for adding to bouquets. Blooms summer and fall. 50 cts. ea.; 3 for \$1.25.

IBERIS (Candytuft), Snowflake. Large white flowers of snowflake pattern completely cover evergreen foliage in spring. An improved variety, more compact and larger flowered than the type. Fine for the front of a border or for edgings. 50 cts. ea.; 3 for \$1.25.

IRIS SIBIRICA, Caesar's Brother. The best dark blue Siberian Iris, of unusually rich, black pansy-purple, with a glorious depth of color. 30 inches high. Beautiful and different. 50 cts. ea.; 3 for \$1.25.

DAYLILIES

These are flowers you can plant for both yourself and your grandchildren. All these beautiful new hybrids are long lived, like the old varieties still growing by long-abandoned homesites. Now they have wider color range, more variety in height and blooming season, but they are still as hardy, free blooming, dependable, disease free and permanent. Only more graceful and much more beautiful.

Baronet. See illus. ① Red flowers in June and again in Sept. 2 ft. \$2.50 ea. \$1.25 ea.

Bijou. Red-orange. Profuse bloom for long season. 2½ ft. July-Aug. \$1.25 ea.

Chengtu. See illus. ③ 4½-inch blooms, brilliant copper and carmine. Recurved petals. 3 ft. July-Aug. \$1.25 ea.

Circe. See illus. ② Clear yellow on well-branched stalks. 4 ft. July-Aug. \$1 ea.

Multiflora Summer Hybrids. Clear orange. 2½ ft. Profuse bloom, late June through Aug. \$1 ea.

Serenade. Pastel yellow and pink with fluted petals. Try this with blue delphinium. 4 ft. June, July. \$1.50 ea.

6 Choice Daylilies \$7.25

For a long season of bloom
(June to Sept.)

These splendid varieties will bring more and more bloom to your garden every summer.

1 each of all 6 Daylilies offered, including the 3 illustrated.

\$7.25 for 6 lifetime plants

ASK FOR OFFER 120



Anthemis, Moonlight

Gives hundreds of flowers over a long blooming season. 50 cts. ea.; 3 for \$1.25

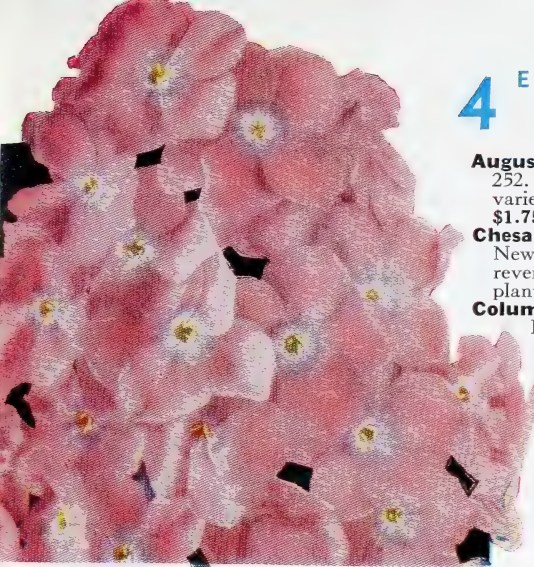


Carnation, Lucia

A fine, new, hardy Carnation which should be in every garden. 50 cts. ea.; 3 for \$1.25.

Gypsophila, Rosy Veil. (Pink Baby's Breath)





Columbia. A charming pink Phlox. 65 cts. ea.

4 EXTRA-FINE PHLOX \$2.35

Augusta. See illus. Plant Pat. 252. Does not fade. A splendid variety. 65 cts. ea.; 3 for \$1.75.

Chesapeake. Plant Pat. pend. New. Tyrian-rose with silver reverse. Compact, 15-inch plants. 65 cts. ea.; 3 for \$1.75.

Columbia. See illus. Plant Pat. 118. Finest light pink. Blue eye. Long in bloom. 65 cts. ea.; 3 for \$1.75.

Purple Heart. New. Deep blue-purple with darker center. 65 cts. ea.; 3 for \$1.75.

OFFER 121A

1 each
of the above four
\$2.35



Phlox, Augusta. 65 cts. ea.; 3 for \$1.75

Plant hardy PHLOX this fall for bloom next summer when other perennial flowers are few.

4 CHOICE PHLOX \$1.65

50 cts. ea.; 3 of a variety for \$1.25

Brilliant. Shining scarlet with darker eye Extra fragrant. Many large blooms.

Mary Louise. White. Unusually large heads of waxy flowers, white as Carrara marble. Florets almost twice the size of ordinary Phlox.

Salmon Beauty. Clear salmon-pink with white eye. Outstanding.

Starlight. A starry white eye on a violet ground gives this variety a lovely distinction.

OFFER 121B. 4 choice Phlox **\$1.65**

7 BRILLIANT PHLOX \$2.35

40 cts. ea.; 3 of a variety for \$1.00

Caroline Vandenberg. The bluest Phlox of all. Lavender-blue. Large florets.

Europa. White with carmine eye.

Flash. A flashing red that compels attention.

George Stipp. Lovely salmon.

New Bird. Striking reddish purple with darker eye. A gorgeous, vivid color.

Painted Lady. Silvery pink with cherry eye.

Thor. Full, symmetrical heads of salmon-pink florets with red centers. One of the very best. Tall and strong.

OFFER 121D. 1 each, 7 Brilliant Phlox **\$2.35**

15 PHLOX—1 each of all listed Value \$7.40 **\$6.15**

A fine collection of superior varieties that will give a mass of midsummer bloom.

ASK FOR OFFER 121C

DELPHINIUMS, Field-grown Plants

See illustration. Plant these aristocratic flowers to make the high spot in your garden. They come in glorious shades of blue, from deep violet to palest blue-lavender and countless lovely intermediate tints. Flowers large, spikes tall, strong and graceful. For a brilliant garden picture, plant Delphiniums in back of the gold and copper of Daylilies, Regal Lilies.

Field-grown Delphinium Hybrids. 50 cts. ea.; 3 for \$1.25

Delphinium Hybrids



Aquilegia (Columbine)

REGAL LILIES

See illustration. Probably the easiest fine Lily to grow and one of the most beautiful. Deliciously fragrant blooms in June; white trumpets with golden throats, the outside stained wine-color.

3 for 95 cts.; 6 for \$1.85; 12 for \$3.50; 100 for \$27.50

REGAL LILY

Easy to grow, long lasting, fragrant and one of the world's most beautiful Lilies. 3 for 95 cts.; 6 for \$1.85.



12 FINE PERENNIALS, \$4.35

Refined, neat-growing perennials which are suitable for any garden or border, large or small. Each has a long season of showy, attractive bloom.

- 1 **Anthemis, Moonlight**
- 3 **Aquilegia (Columbine)**
- 1 **Carnation, Lucia**
- 1 **Carnation, Silvermine**
- 1 **Coreopsis, Golden Shower**
- 3 **Dianthus (Pinks), 1 each Meg Gardner, Mrs. Back and Mrs. Wormald**
- 1 **Gypsophila, Rosy Veil (Baby's Breath)**
- 1 **Iberis, Snowflake (Evergreen Candytuft)**

ASK FOR OFFER 121



Star Roses as Christmas Gifts

Order Star Roses for your flower-loving friends. They make a lovely, lasting and appreciated Christmas gift.

1. At Christmas time, the friends for whom you order Roses will receive from us an attractive Christmas card announcing your gift. We will mail the card to arrive at the proper time. It is best to send your Christmas orders as early as possible, and this will help you, too, to avoid the rush of many things to do at the last moment.

2. By ordering Star Roses as Christmas gifts, you avoid the tiresome annoyance of pushing through Christmas shopping crowds, and have the satisfaction of knowing your present will be joyfully received, even if it is duplicated by someone else. There is always room for more Roses in a flower-lover's garden.

3. Be sure to give full names and addresses to which the Roses are to be sent. Please print names and addresses plainly to avoid any chance of error in shipping.

4. On the gift card we write your name as donor, the names of the Roses ordered and the date when the plants will be forwarded. We attend to the shipping time. Full planting and cultural directions go with each order.

5. Please make all gift orders on a separate sheet from other orders.

6. In selecting varieties, we suggest some of the following, which are fine kinds in good supply: Peace, Crimson Glory, Crimson King, Horace McFarland, Girona, Good News, Mme. Cochet-Cochet, Mrs. Pierre S. du Pont, Poinsettia and Soeur Therese. If you select other kinds, please indicate a second choice.

7. Or you can order \$2.50 and \$5 or larger gift certificates for your friends to make their own selections.

MINIATURE ROSES. Hardy

3-in. Pot-Grown Plants, Postpaid

Fall shipment for outdoor planting in the south. For outside, north of Washington, D. C., we advise spring planting.

For indoor winter flowering, plants should be rested outdoors until after January 1, then brought in, repotted in fresh soil and placed in a sunny window where they will bloom in a few weeks. We can supply rested plants any time after January 1, for indoor flowering. They will not thrive in a dry atmosphere.

★**MIDGET.** Plant Pat. 466. The tiniest rose-red, fully double Miniature Rose. Almost thornless. 75 cts. ea.; 3 for \$1.88.

★**PIXIE.** Plant Pat. 408. The world's tiniest double white Rose. It shows pink shadings in cool weather. 75 cts. ea.; 3 for \$1.88.

★**ROSA ROULETTI.** Small, rose-pink, double flowers are about an inch in diameter. 65 cts. ea.; 3 for \$1.65.

★**SWEET FAIRY.** (De Vink.) Plant Pat. 748. NEW. The first Miniature with true Rose fragrance. Dainty, dark pink buds open to charming very double, 1-inch blooms of apple-blossom-pink. \$1.25 ea.; 3 for \$3.15.

★**TOM THUMB.** Plant Pat. 169. Deep crimson bud grow slightly lighter as the bloom opens, later disclosing a bright eye in the heart of each flower. Beautifully formed, perfect, tiny Roses. 75 cts. ea.; 3 for \$1.88.

3 MINIATURE ROSES \$2.35

★**Midget.** Plant Pat. 466. Rose-red.

★**Pixie.** Plant Pat. 408. White.

★**Sweet Fairy.** Plant Pat. 748. Apple-blossom-pink.

ASK FOR OFFER 122

NEW PRICES FOR FALL 1947

Please note our lowered prices on many Roses in this catalog, including the 50-ct. reduction in the price of Peace. The weather here has helped us produce a bigger and better current crop of Rose plants than for some years past. This advantage we are passing on to you—not only in better plants but in new, lower prices. The group offers give you further savings.

Our packing and shipping problems, which have been so annoying these past few years, are being solved and we are rebuilding the force of trained workers essential for shipping orders promptly during the short season when planting conditions are most favorable. We expect, this fall, to again supply a high standard of service to our customers, which we have not been able to do in recent years.

And this year's crop of Roses is looking fine!

SHRUB ROSES

★**MARTHA LAMBERT.** An everblooming Shrub Rose with large clusters of intense scarlet, single blooms like heads of phlox. Hardy, healthy and attractive. \$1.15 ea.; 3 for \$3.

★**THE FAIRY.** This Rose is one of the finest and most useful plants ever introduced. "A regular Busy-Lizzie for bloom." Rosettes of seashell-pink come in large sprays on a medium-low, spreading bush. The small, shiny, attractive foliage seems to be proof against disease or neglect. For adding a charming spot of constant bloom in front of a shrub border or anywhere else in the garden, it has no equal. \$1.15 ea.; 3 for \$3.

★**MAX GRAF.** A very hardy trailing Rose for embankments. The large, clear pink, single blooms come profusely and make a lovely show in June. \$1.15 ea.; 3 for \$3.

HYBRID PERPETUALS

★**FRAU KARL DRUSCHKI.** The world-renowned snow-white Hybrid Perpetual Rose that repeats its blooms throughout the growing season. Not fragrant, but unsurpassed in form and size. \$1.15 ea.; 3 for \$3.

★**HENRY NEVARD.** This delightfully fragrant, deep crimson Hybrid Perpetual Rose repeats its glowing blooms in the fall. \$1.15 ea.; 3 for \$3.

FOR MORE PLANT ENJOYMENT



Price, \$2, postpaid or, with a \$10 order, only \$1.20, postpaid



25 cts. a year, or Free with \$5 order

"How to Grow Roses" is the title of a book now in its 19th edition, begun to meet the needs of our customers. (The last three editions have enjoyed the joint authorship of J. Horace McFarland and Robert Pyle, and continuing heavy annual sales.) "Success with Roses" for more than a dozen years has been a kind of news letter to our customers regarding interesting people and events in the Rose world, such as important personages visiting Star Rose Gardens, the payment of Red Rose Rent, etc.

The American Rose Society, while it was still needing to be nurtured, for a dozen years made its headquarters as a guest tenant in our office. Now a far greater enterprise and one of some-day hemispheric dimensions is temporarily housed here. Please ask for information regarding and join the American Horticultural Council, Inc., organization Committee for "United Horticulture for the United States."

These, together with other such organizations, are destined to assist plant lovers more fully to know and to enjoy their plants. Therefore, as loyal citizens in the Democracy of a Nation we love, we are committed to such support.

ALL PERENNIALS ARE
ON PAGES 20 AND 21

ROSE INDEX

American Pillar.....	3, 19
Ami Quinard.....	8
Angels Mateu.....	8
Better Times.....	8
Betty Prior.....	16
Betty Uppichard.....	8
Blanche Mallerin.....	4, 24
Blaze.....	18
Boudoir.....	4
Bouquet.....	16, 17
California.....	8
Cathrine Kordes.....	8
Charlotte Armstrong.....	4
Christopher Stone.....	8, 13
City of York.....	19
Climbing American Beauty.....	19
Condesa de Sagtogo.....	8, 13
Countess Vandal.....	9
Crimson Glory.....	9
Crimson King.....	4, 24
Dainty Bess.....	9
Diamond Jubilee.....	4
Dicksons Red.....	9
Donald Prior.....	16
Dorothy James.....	9
Doubleblons.....	19
Dr. J. H. Nicolas.....	18
Dr. W. Van Fleet.....	19
Duquesa de Penaranda.....	9
Eclipse.....	9
Editor McFarland.....	9, 12
Ernie Pyle.....	4
Eternal Youth.....	9
Etoile de Hollande.....	9
Faience.....	10
Fantasia.....	4
Fantastique.....	4
Flash.....	19
Floradora.....	16
Frau Karl Druschki.....	22
Fred Edmunds.....	4
Girona.....	10, 13
Gloaming.....	10
Golden Climber.....	19
Golden Dawn.....	10
Golden Sagtogo.....	10
Goldilocks.....	16
Good News.....	10, 12
Grande Duchesse Charlotte.....	5
Gross an Aachen.....	16
Heart's Desire.....	5
Henry Nevard.....	22
Highland Park.....	5
Home Sweet Home.....	10
Horace McFarland.....	5, 24
Jacotte.....	19
Joanna Hill.....	10
Kaiserin Auguste Viktoria.....	10
Katherine T. Marshall.....	5
King Midas.....	19
Koralle.....	16
Lady Ashtown.....	11
Little Miss Muffett.....	17
Lowell Thomas.....	5
Luna.....	11

Star Rose Guarantee

We guarantee every Star Rose to bloom the first blooming period after purchase, failing which we will replace the plant or refund its cost.

To Our Customers, from Up Toward the Stars:

June 18, 1947.

This letter is being written on the American Overseas Airline Flagship "Boston" at 7000 feet above the ocean as we wing our way for a speedy trip that will land me in the Rose fields of Europe and take me to International Rose Test Gardens which we thus inspect on both sides of the Atlantic. Since 1911 we have regularly (wars permitting) made successive trips into ten nations of Europe where we know personally the leading growers and from whose product we select for further testing in the U.S.A. before offering them to you.

We want flower lovers to know about Star Roses—we believe it is to their interest. Even a dozen or more years ago we had already spent more than a million dollars in telling them. But this we long ago learned: that as our product is excellent or even superior, our customers are the first to recognize it and they are our best advertising medium as they tell their neighbors of our excellence. We believe that is partly why the demand for Star Roses, even from our small catalog, takes all the plants, and more than we are able to grow.

To have "The Best Roses for America" we must not only produce well-grown plants but we must also grow the best kinds. By long years of training, and adopting ever better methods, West Grove grown Roses are recognized as "none better."

While those well trained in growing are solidly on the job at West Grove (come see our 350,000 Rose plants in full bloom), we must at the same time make sure that when better varieties of Roses are to be had, we shall be growing them. How can we be sure to select the best unless we see them all? That is the reason that I am, right now, on my way to find more new Roses, as we formerly found PEACE and other leaders.

After all, the real test will come in your garden. We aim to have our future record exceed our past 50 years (see the story on pages 2 and 3) so let your garden have its share of the "Best-by-Test Star Roses—The Best Roses for America."

THE CONARD-PYLE CO.
West Grove, Penna.

Robert Pyle
President

	Page
Mme. Butterfly.....	11
Mme. Chiang Kai-shek.....	6
Mme. Cochet-Cochet.....	11, 12
Mme. Henri Guillot.....	11
Mme. Joseph Perraud.....	11
Mme. Jules Bouche.....	11
Mme. Marie Curie.....	6
Margaret McGredy.....	11
Mark Sullivan.....	6
Martha Lambert.....	22
Mary Margaret McBride.....	6
Mary Wallace.....	19
Max Graf.....	22
McGredy's Sunset.....	11
Mermaid.....	18
Midget.....	22
Mirandy.....	7
Miss Rowena Thom.....	14
Mrs. E. P. Thom.....	14
Mrs. Paul R. Bosley.....	7
Mrs. Pierre S. du Pont.....	14
Mrs. Pierre S. du Pont Climber.....	18
Mrs. Sam McGredy.....	14
Narzisse.....	7
New Dawn.....	18
Nocturne.....	6
Paul's Scarlet Climber.....	19
Peace.....	1, 3
Peachblow.....	7
Permanent Wave.....	17
Pinocchio.....	17
Pixie.....	22
Poinsettia.....	12, 14
Poulsen's Yellow.....	17
President Herbert Hoover.....	14
President Macia.....	14
Prosperity.....	18

	Page
Radiance.....	14
Ramon Bach.....	14
Red Radiance.....	15
Red Ripples.....	17
Rome Glory.....	15
Rouletti.....	22
Rubaiyat.....	7
San Fernando.....	6
Signora.....	15
Silver Moon.....	19
Snowbird.....	15
Soeur Therese.....	13, 15
Spanish Beauty.....	19
Summer Snow.....	17
Sweet Fairy.....	22
Talisman.....	15
Talisman Climber.....	18
Texas Centennial.....	15
The Doctor.....	15
The Fairy.....	22
Tom Thumb.....	22
Topaz.....	17
White Briarcliff.....	15
World's Fair.....	17

PRICES in this catalog apply to shipments made prior to December 15, 1947. We prepay shipping charges. We do not ship C. O. D.

STAR ROSE TRADE-MARK

This is a durable, celluloid, star-shaped Tag bearing the name of the Rose on the back. You have the satisfaction of always knowing a Star Rose by name when it blooms. Insist on having the Star Rose Trade-Mark on every Rose plant you purchase.



3
Great
ROSES
\$ 4

ASK FOR OFFER 124

★CRIMSON
KING

★BLANCHE MALLERIN



3 Great ROSES \$ 4

3 newer Roses of fine form and excellent lasting qualities. All are exhibition type blooms on long stems, excellent for cutting.

Deep crimson, sparkling white and rich buff-salmon, they make a glorious trio for your garden and are outstanding as cut-flowers, too.

ASK FOR OFFER 124

★**BLANCHE MALLERIN.** Pure white, untouched by color in bud or bloom. Medium height. Flowers uniformly large and of fine form.

(Plant Pat. 594.) Described on p. 4.

\$1.50 ea.; 3 for \$4.

★**CRIMSON KING.** Combines the best characteristics of its two notable parents, Crimson Glory and Kardinal. Described on p. 4.

\$1.50 ea.; 3 for \$4.

★**HORACE McFARLAND.** A long-lasting Rose of magnificent form and glorious color. Apricot buds open rich, unfading buff-salmon.

(Plant Pat. 730.) Described on p. 5.

\$1.50 ea.; 3 for \$4.

★HORACE
McFARLAND

